

EN  
54-24

⚡  
100V

🔥  
Fireproof

### Features:

- Softline design
- Impact-resistant housing
- BS 5839

### Description

The 10W powered speaker is equipped with a 165mm full-range loudspeaker chassis and a 100V transformer with 4 power adjustments. The high-density, shock-resistant white MDF wood housing provides a low distortion sound. A robust front grille made of steel guarantees enduring stability.

A 2 pin-ceramic block and a thermal fuse provide additional reliability. The speaker chassis is impregnated against wetness.

The speaker is secured with the high protection class IP 54 against the risks of environmental influences.

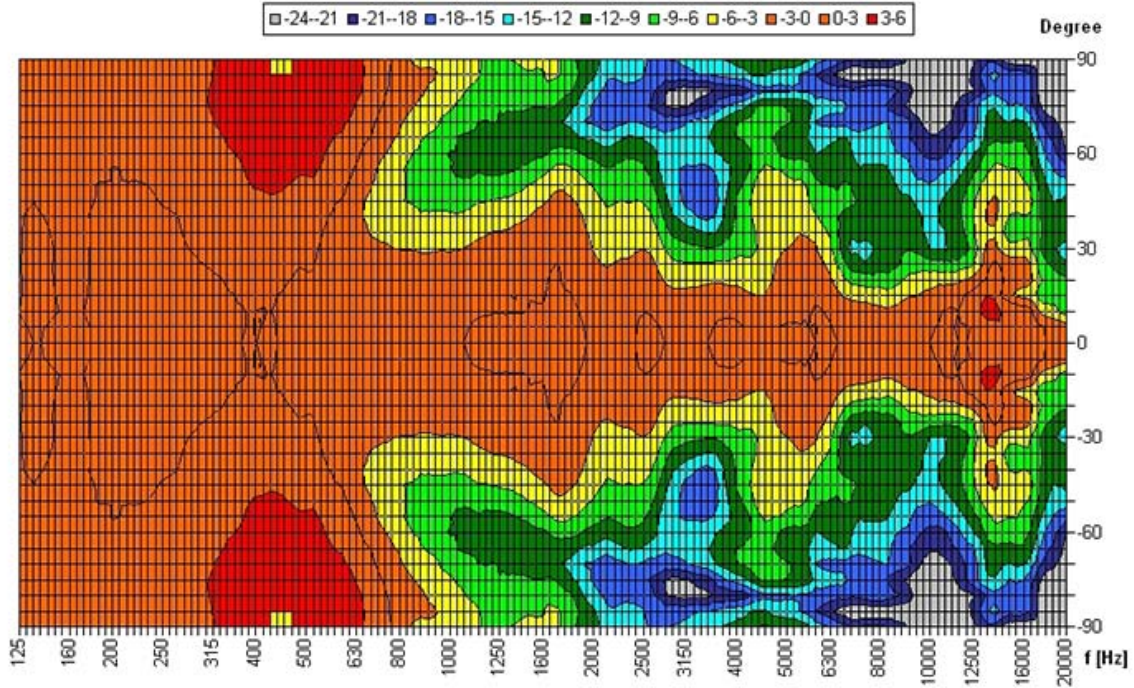
The speaker is also compliant with the British Standard BS 5839, Part 8.

The well-proven spring clamp on the rear plate ensures a quick and easy mounting on the wall.

Polar Diagrams

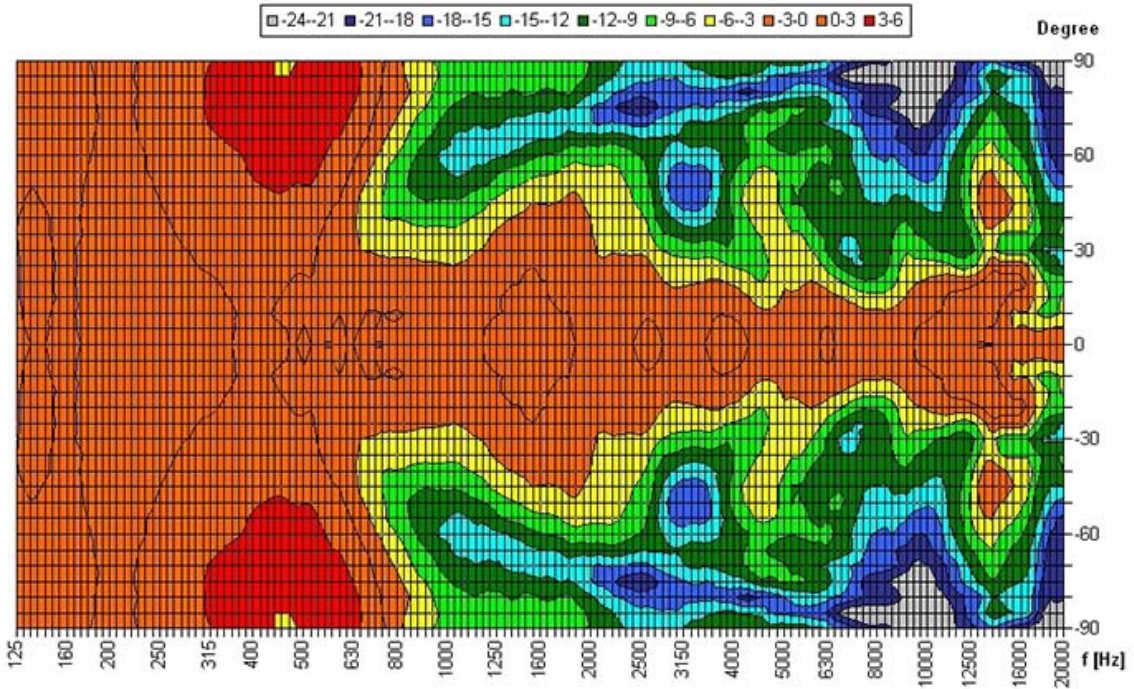
Copyright by Four-Audio GmbH & Co KG Licensed to AAC

Horizontal Isobars



Copyright by Four-Audio GmbH & Co KG Licensed to AAC

Vertical Isobars





## Electrical specifications

Description	WM-W-10W-165/EN
Power	10/6/3/1,5 W
Impedance (100V)	1000/1667/3333/6667 ohm
Frequency Range	197 - 21.900 Hz
Frequency Response	175 - 23.500 Hz
SPL, rated noise power / 4m	91,0 dB
Sensitivity EN54-24, 1W/4m	81,0 dB
Sensitivity EN54-24, 1W/1m	93,0 dB
Dispersion -6dB, 500Hz	h=180° v=180°
Dispersion -6dB, 1KHz	h=160° v=160°
Dispersion -6dB, 2KHz	h=100° v=100°
Dispersion -6dB, 4KHz	h=60° v=60°

Please note: Because of many different types of ceiling materials and ceiling strengths we recommend to build in a sample of the speaker to match the requirements accurately.

## Mechanical specifications

Dimensions	253x194x82 mm
IP Rating	IP54
Weight (net)	1,86 kg
Temperature range	-10 / +55 C°
Mounting	spring clamp
Connector	2-pin ceramic block
Maximum cable cross section	8mm <sup>2</sup>
Max. cable cross section loop	2x2mm <sup>2</sup>
Colour	RAL 9010