

EN
54-24

100V

Fireproof

Features:

- Ball-proof
- Wall- and ceiling mounting
- BS 5839

Description

The 10W powered speaker is equipped with a 165mm full-range loudspeaker chassis and a 100V transformer with 4 power adjustments. The high-density, shock-resistant white MDF wood housing provides a low resonance sound. A robust front grille made of steel guarantees enduring stability.

A 2 pin-ceramic block and a thermal fuse provide additional reliability. The speaker chassis is impregnated against wetness.

The speaker is secured with the high protection class IP 54 against the security risks of environmental influences.

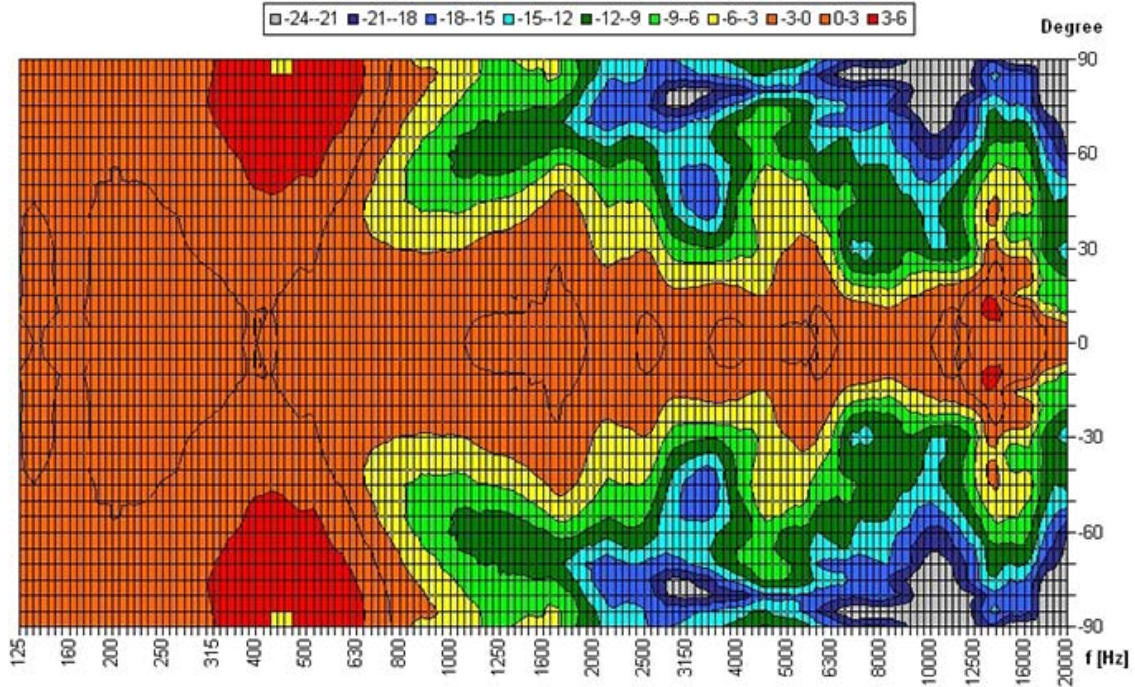
The speaker is also compliant with the British Standard BS 5839, Part 8.

The quick and easy installation via the enclosed screws prevents the speaker from dropping when installed on ceilings. The sturdy ball-proofness qualifies the speaker for the installation in sports facilities and schools.

Polar Diagrams

Copyright by Four-Audio GmbH & Co KG Licensed to AAC

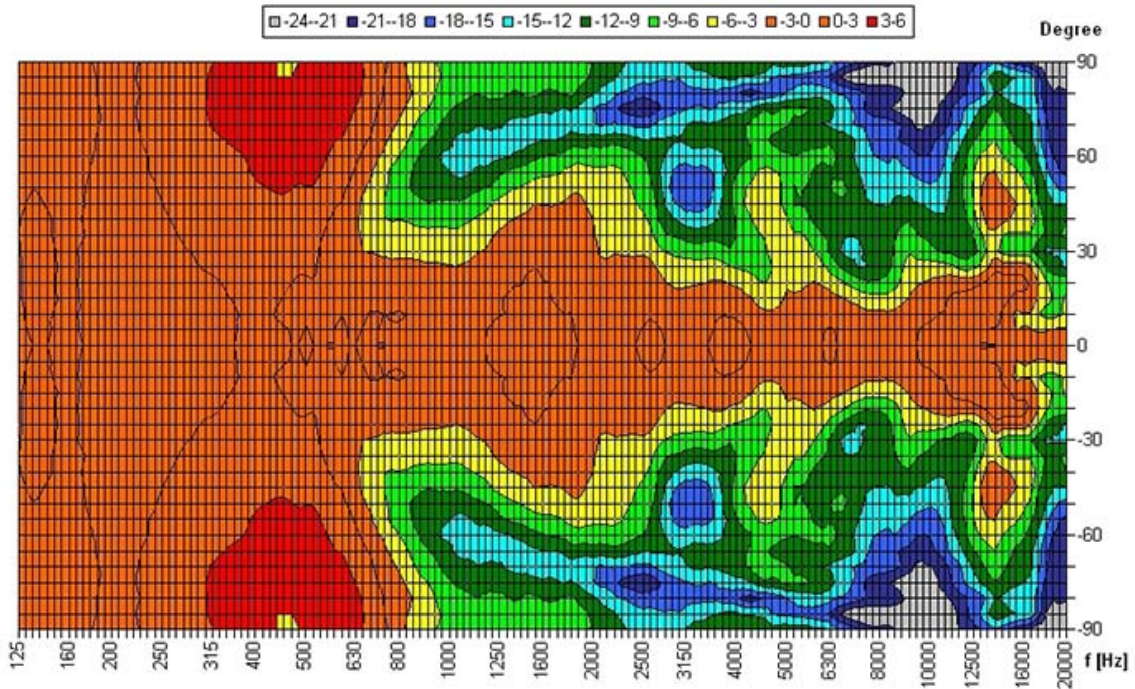
Horizontal Isobars



Parameters: Cyclic Move: 0° ; Symmetry: 0..+180 sym ; Freq.Smooth: 1/3 Oct ; Ang.Resol.: 5° ; Rel. to: 0° Axis 0°

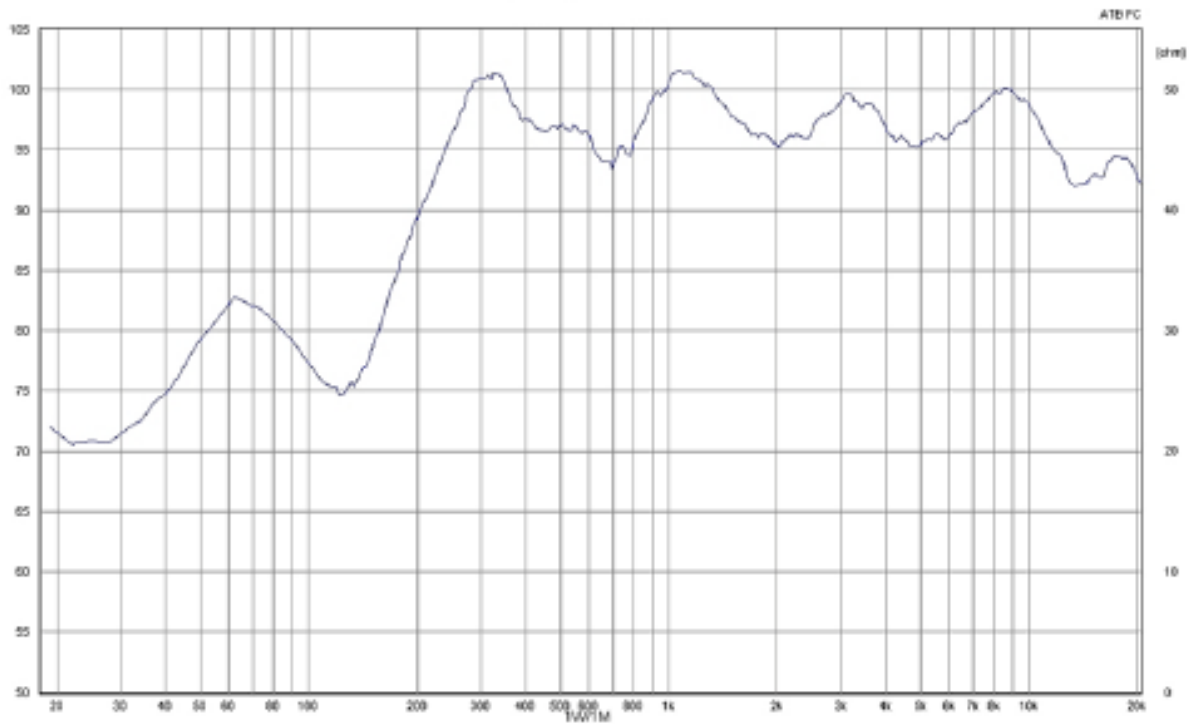
Copyright by Four-Audio GmbH & Co KG Licensed to AAC

Vertical Isobars

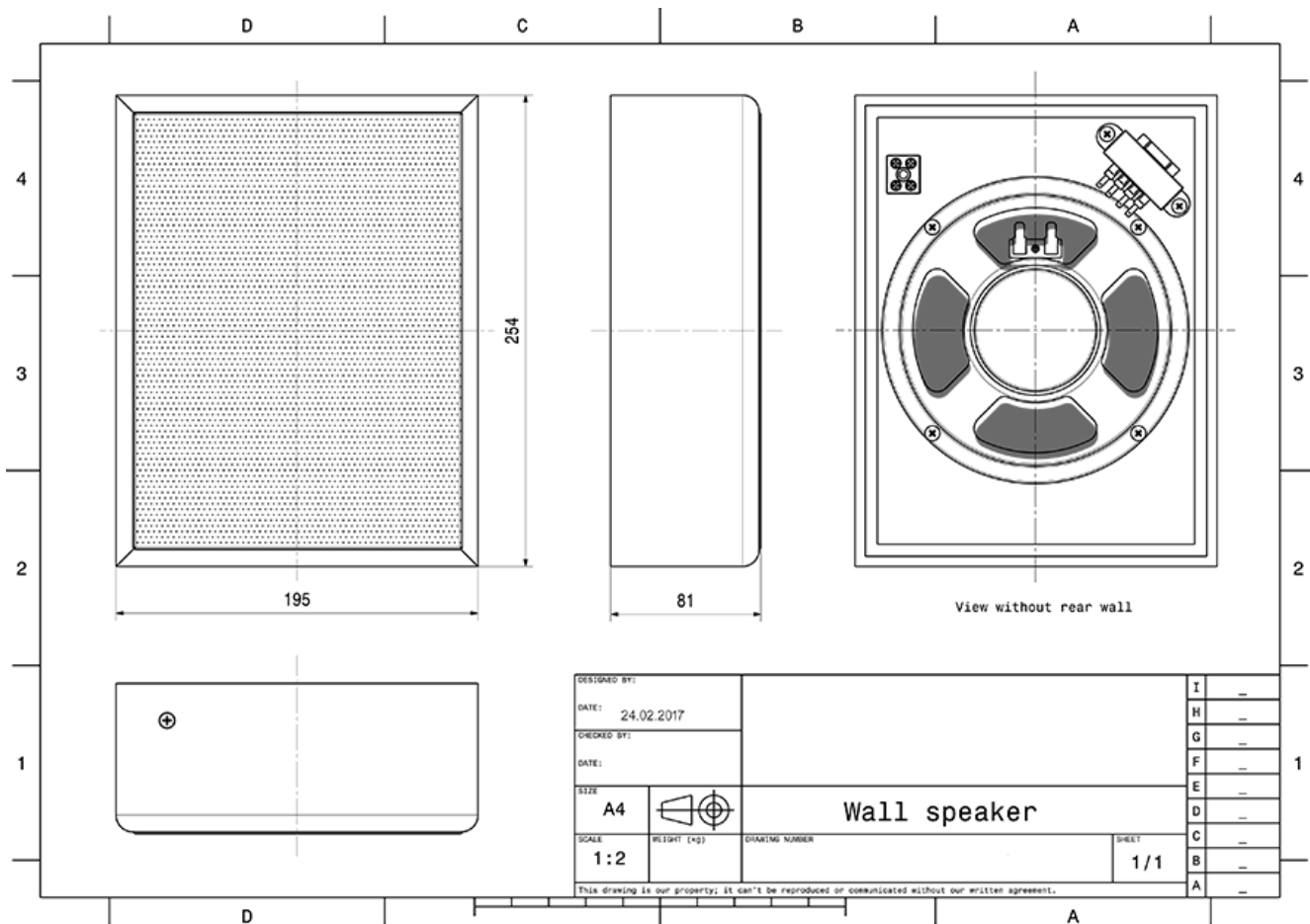


Parameters: Cyclic Move: 0° ; Symmetry: 0..+180 sym ; Freq.Smooth: 1/3 Oct ; Ang.Resol.: 5° ; Rel. to: 0° Axis 0°

Frequency Response Diagrams



Technical Diagrams



Electrical specifications

Description	WCM-W-10W-165/EN
Power	10/6/3/1,5 W
Impedance (100V)	1000/1667/3333/6667 ohm
Frequency Range	197 - 21.900 Hz
Frequency Response	175 - 23.500 Hz
SPL, rated noise power / 4m	91,0 dB
Sensitivity EN54-24, 1W/4m	81,0 dB
Sensitivity EN54-24, 1W/1m	93,0 dB
Dispersion -6dB, 500Hz	h=180° v=180°
Dispersion -6dB, 1KHz	h=160° v=160°
Dispersion -6dB, 2KHz	h=100° v=100°
Dispersion -6dB, 4KHz	h=60° v=60°

Please note: Because of many different types of ceiling materials and ceiling strengths we recommend to build in a sample of the speaker to match the requirements accurately.

Mechanical specifications

Dimensions	253x194x82 mm
IP Rating	IP54
Weight (net)	1,89 kg
Temperature range	-10 / +55 C°
Mounting	screws
Connector	2-pin ceramic block
Maximum cable cross section	8mm ²
Max. cable cross section loop	2x2mm ²
Colour	white