

EN
54-24

100V

Fireproof

Features:

- High sound pressure level
- Low mounting depth
- With fireproof BS 5839 compliant

Description

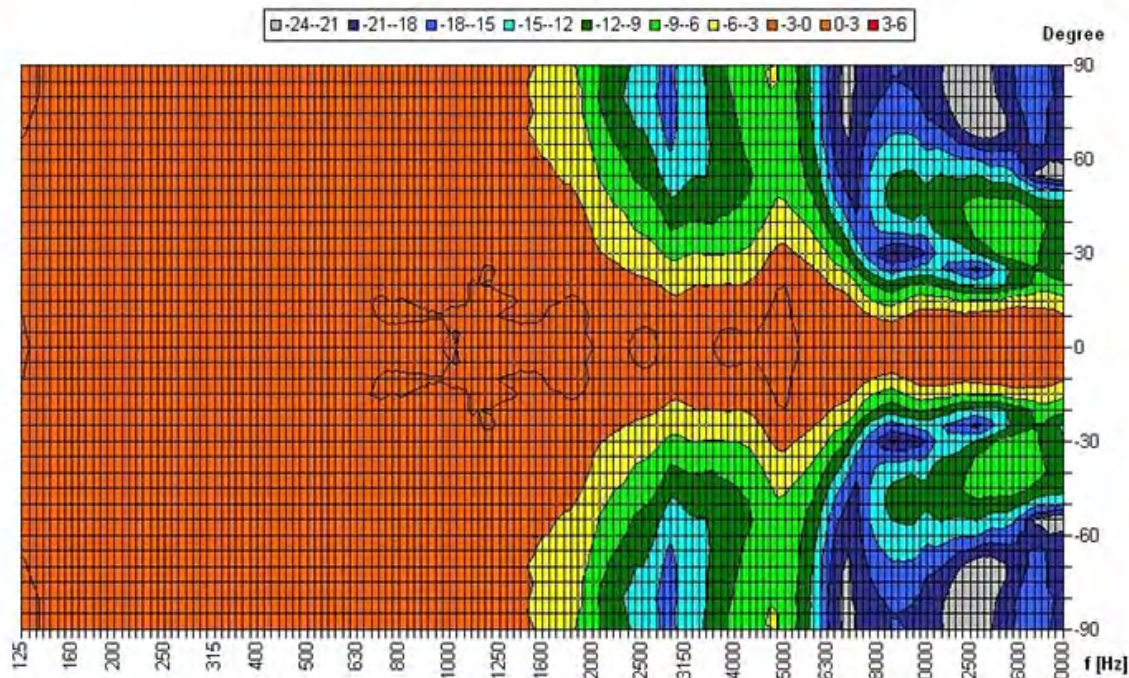
The 6W powered speaker is equipped with a 165mm full-range loudspeaker and a 100V transformer with 3 power adjustments. The powder-coated metal version in RAL 9016 guarantees lasting stability. Thanks to an innovative airflow system, the DL-E provides sound characteristics which are attributed to a conventional bass speaker. An extremely flat construction method allows a low mounting depth of only 70mm, with less than 1 kg product weight. For additional reliability, the speaker is impregnated against wetness.

The speaker is also secured with protection class IP 21C against the security risks of environmental influences. Quick and easy mounting with spring clamps and short tension distance. Perfectly suitable for installations where the installation depth is very limited. Special paint of the speaker in 4-digit RAL- or NCS- colour is available at extra cost.

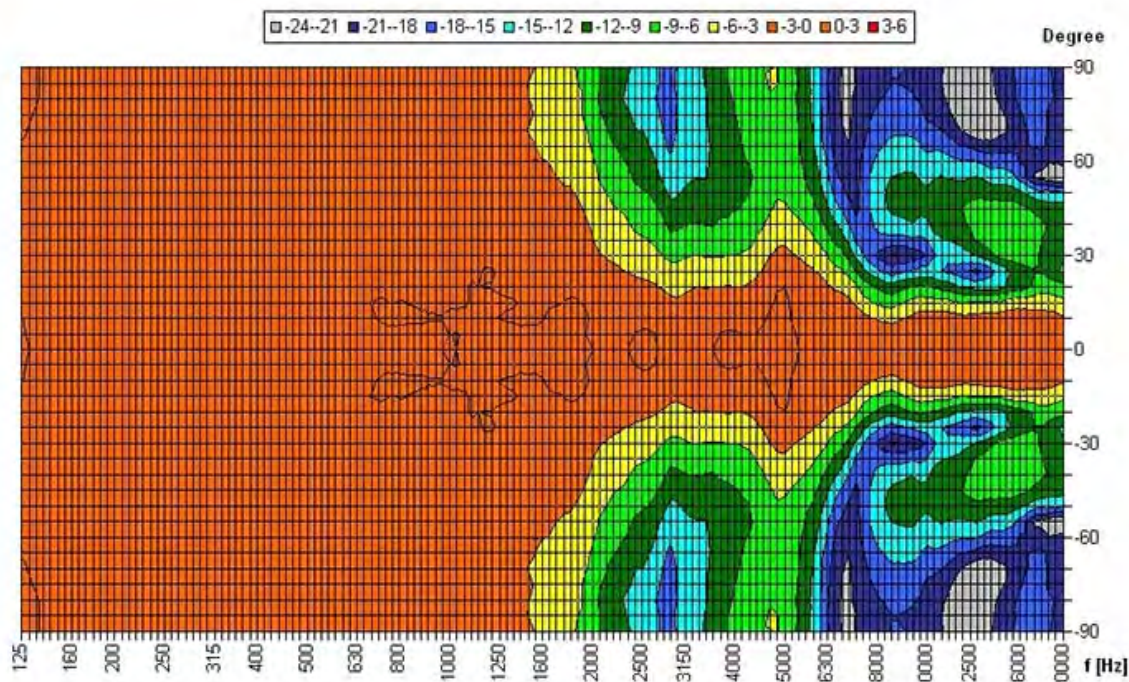
The innovative PET-plastic contact protection is included in the delivery and protected by a European patent (publication no. 2768238).

This speaker is suitable for a ceiling strength of about 3-45 mm. Our specification is primarily related to solid ceilings, for ceilings with soft materials higher ceiling thicknesses could be necessary. In addition, stronger cables and other fittings may also result in changes in the appropriate setup. With regard to the variety of materials and manufacturers, we recommend building a sample of the speaker to match the requirements accurately.

Polar Diagrams



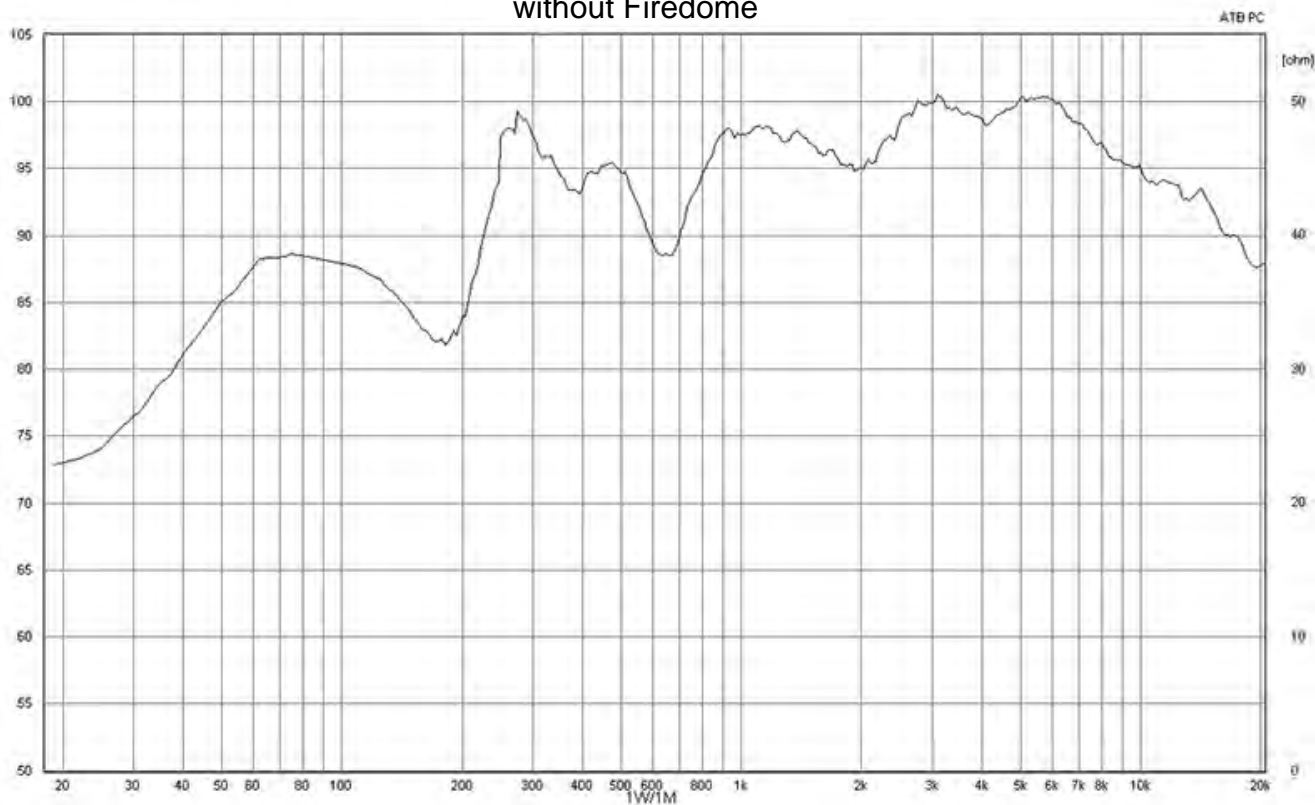
Parameters: Cyclic Move: 0° ; Symmetry: 0..+180 sym ; Freq.Smooth: 1/3 Oct ; Ang.Resol.: 5° ; Rel. to: 0° Axis 0°



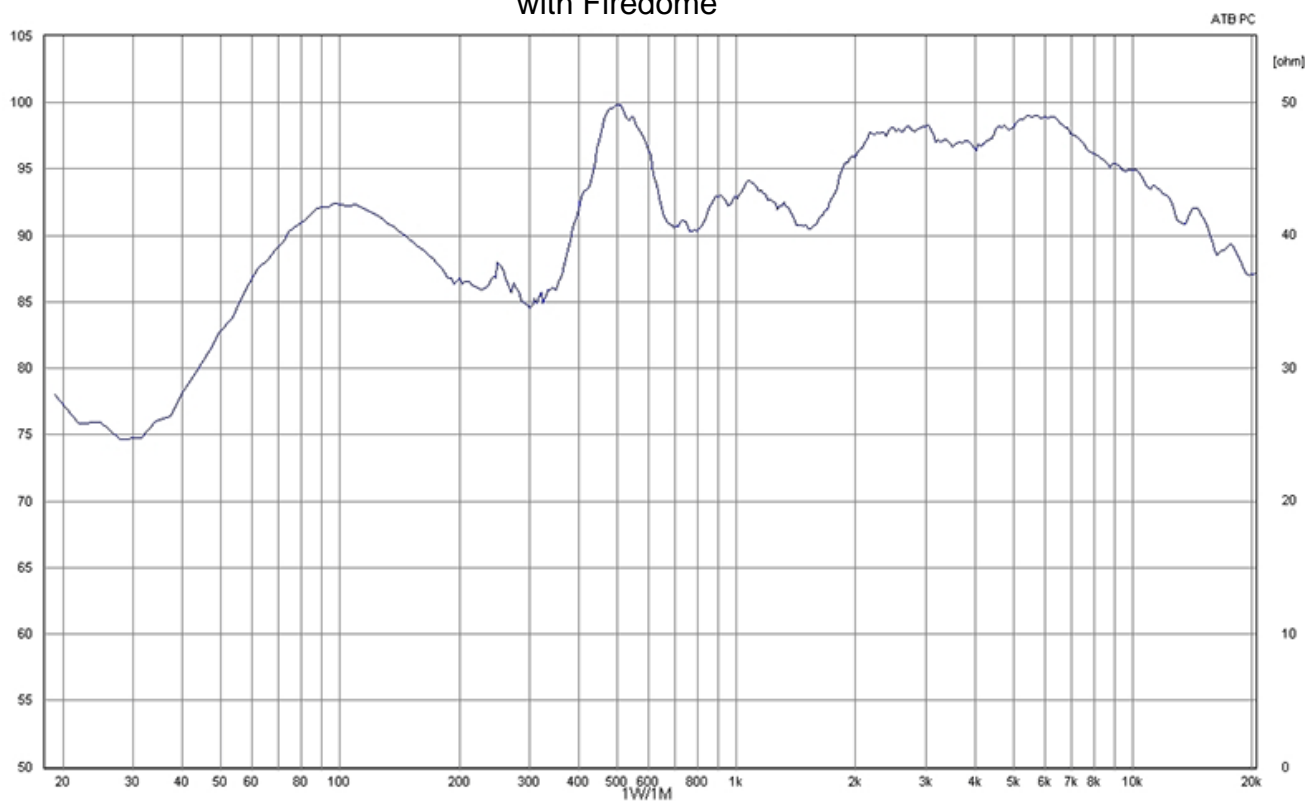
Parameters: Cyclic Move: 0° ; Symmetry: 0..+180 sym ; Freq.Smooth: 1/3 Oct ; Ang.Resol.: 5° ; Rel. to: 0° Axis 0°

Frequency Response Diagrams

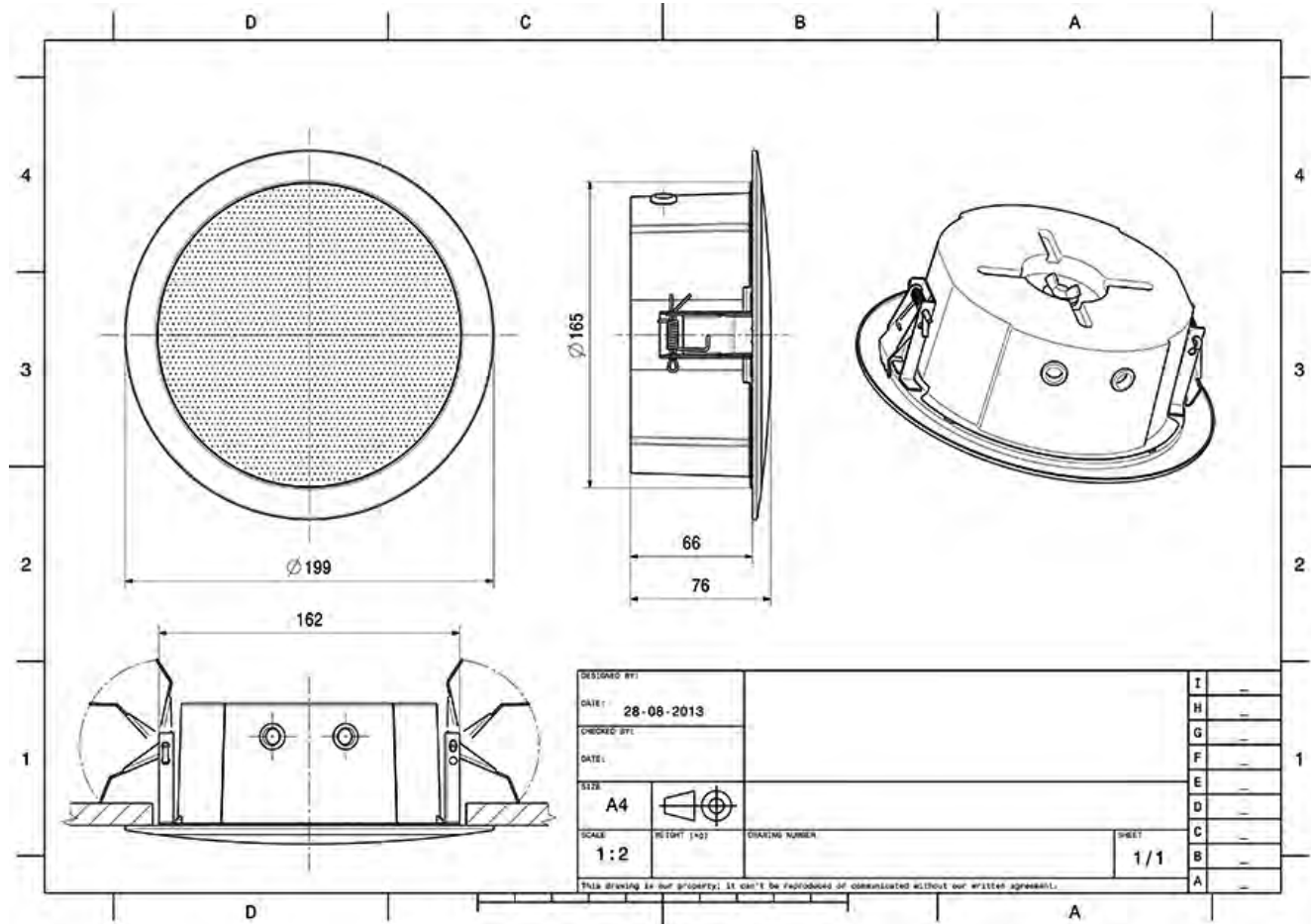
without Firedome



with Firedome



Technical Diagrams



Electrical specifications

Description	CS-M-6W-165/EN	
Power	6/3/1,5 W	
Impedance (100V)	1667/3333/6667 ohm	
Frequency Range	300 - 19.300 Hz	
Frequency Response	70 - 23.500 Hz	
SPL, rated noise power / 4m	85,0 dB	
Sensitivity EN54-24, 1W/4m	79,2 db (plastic)	78 db (metal)
Sensitivity EN54-24, 1W/1m	91,2 dB	
Dispersion -6dB, 500Hz	180°	
Dispersion -6dB, 1KHz	180°	
Dispersion -6dB, 2KHz	135°	
Dispersion -6dB, 4KHz	60°	

Please note: Because of many different types of ceiling materials and ceiling strengths we recommend to build in a sample of the speaker to match the requirements accurately.

Mechanical specifications

Dimensions	199x76 mm
IP Rating	IP21
Weight (net)	0,68 kg
Ceiling Cut-out	166 mm
Temperature range	-10 / +55 °C
Mounting	spring clamp
Connector	4-pin screw terminal
Maximum cable cross section	8mm ²
Max. cable cross section loop	2x2mm ²
Colour	RAL 9016