

EN  
54-24

100V

Fireproof

### Features:

- high sound pressure level
- low mounting depth
- antistatic plastic contact protection

### Description

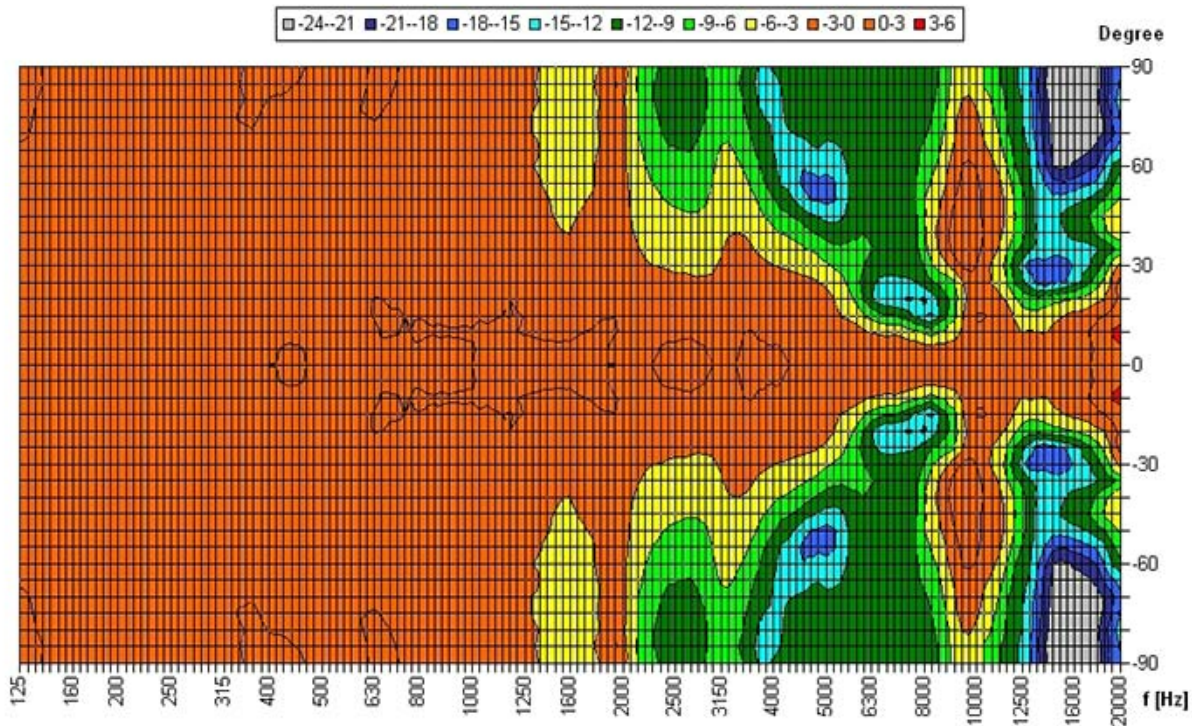
The 6W powered speaker is equipped with a 130mm full-range loudspeaker and a 100V transformer with 3 power adjustments. The powder coated metal similar to RAL 9016 guarantees long-term stability. Thanks to an innovative air flow system, the CS-M-6W-130/EN54 provides sound characteristics which are attributed to a conventional bass speaker. An extremely flat construction method allows a low mounting depth of only 70mm, with less than 1 kg product weight. For additional reliability the speaker is impregnated against wetness.

The speaker is also secured with protection class IP 21C against the security risks of environmental influences. Quick and easy mounting with spring clamps and short tension distance. Perfectly suitable for installations where the installation depth is very limited.

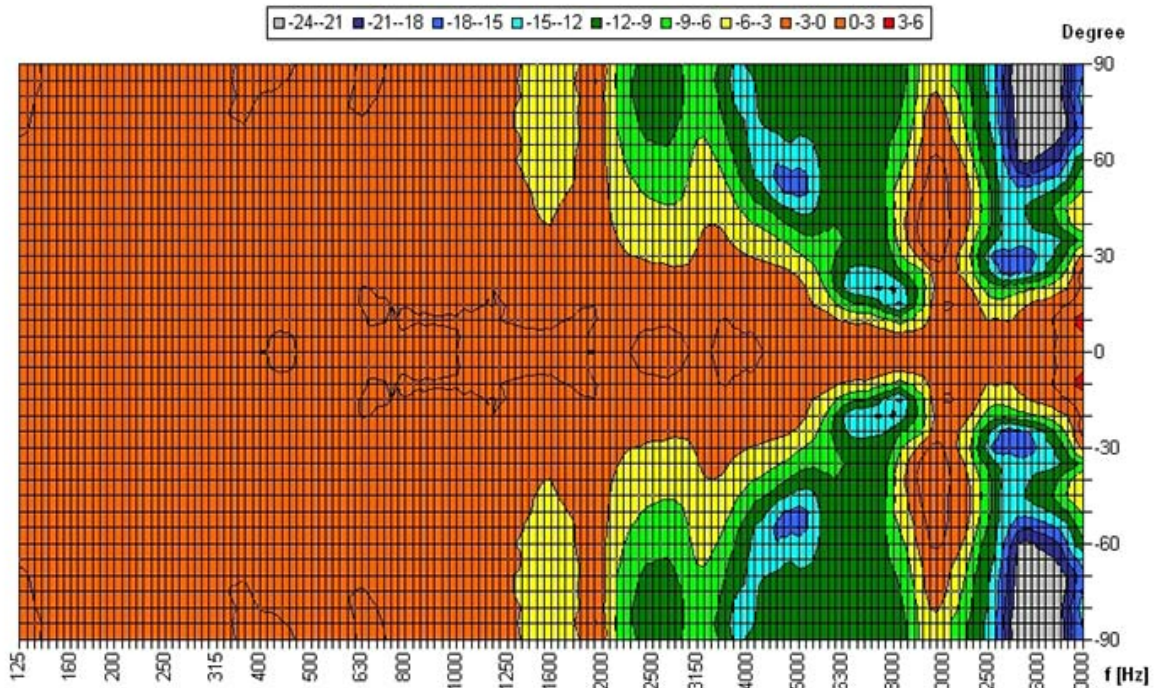
Special paint of the speaker in 4-digit RAL- or NCS- colour available at extra cost. The innovative PET-plastic contact protection is included in the delivery and protected by an European patent (publication no. 2768238).

This speaker is suitable for a ceiling strength of about 3 – 45 mm. Our specification is primarily related to solid ceilings, for ceilings with soft materials a higher ceiling thicknesses could be necessary. In addition, stronger cables and other fittings may also result in changes of the appropriate setup. With regard to the variety of materials and manufacturers, we recommend to build in a sample of the speaker to match the requirements accurately.

Polar Diagrams



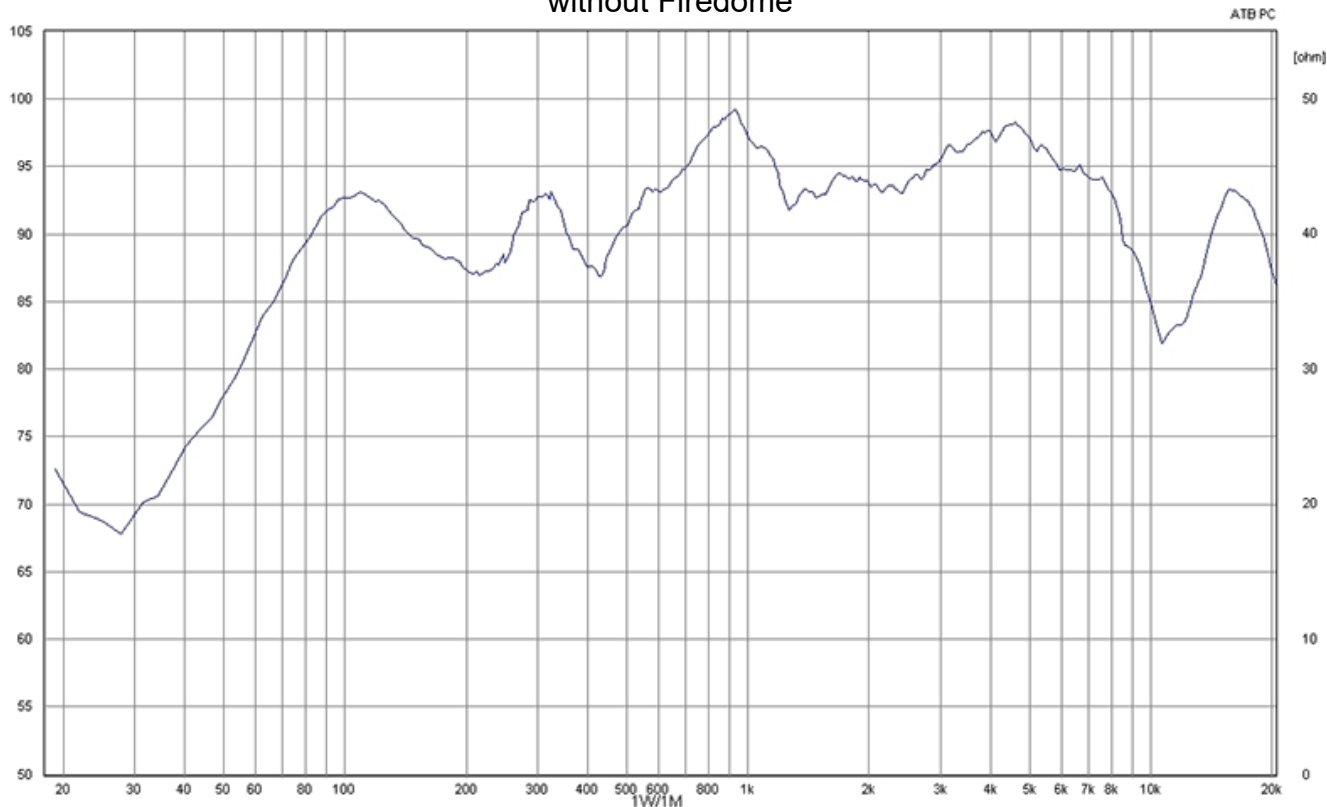
Parameters: Cyclic Move: 0° ; Symmetry: 0..+180 sym ; Freq.Smooth: 1/3 Oct ; Ang.Resol: 5° ; Rel. to: 0° Axis 0°



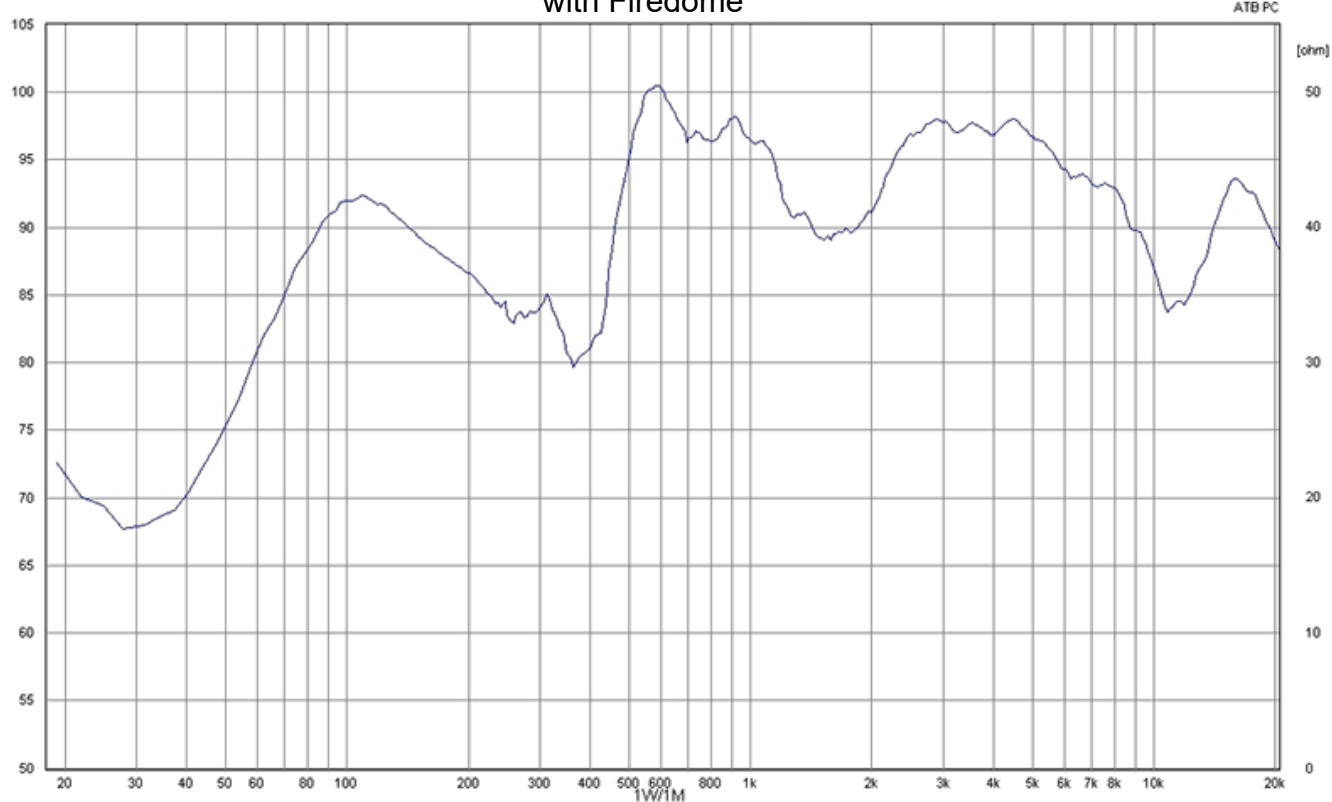
Parameters: Cyclic Move: 0° ; Symmetry: 0..+180 sym ; Freq.Smooth: 1/3 Oct ; Ang.Resol: 5° ; Rel. to: 0° Axis 0°

Frequency Response Diagrams

without Firedome

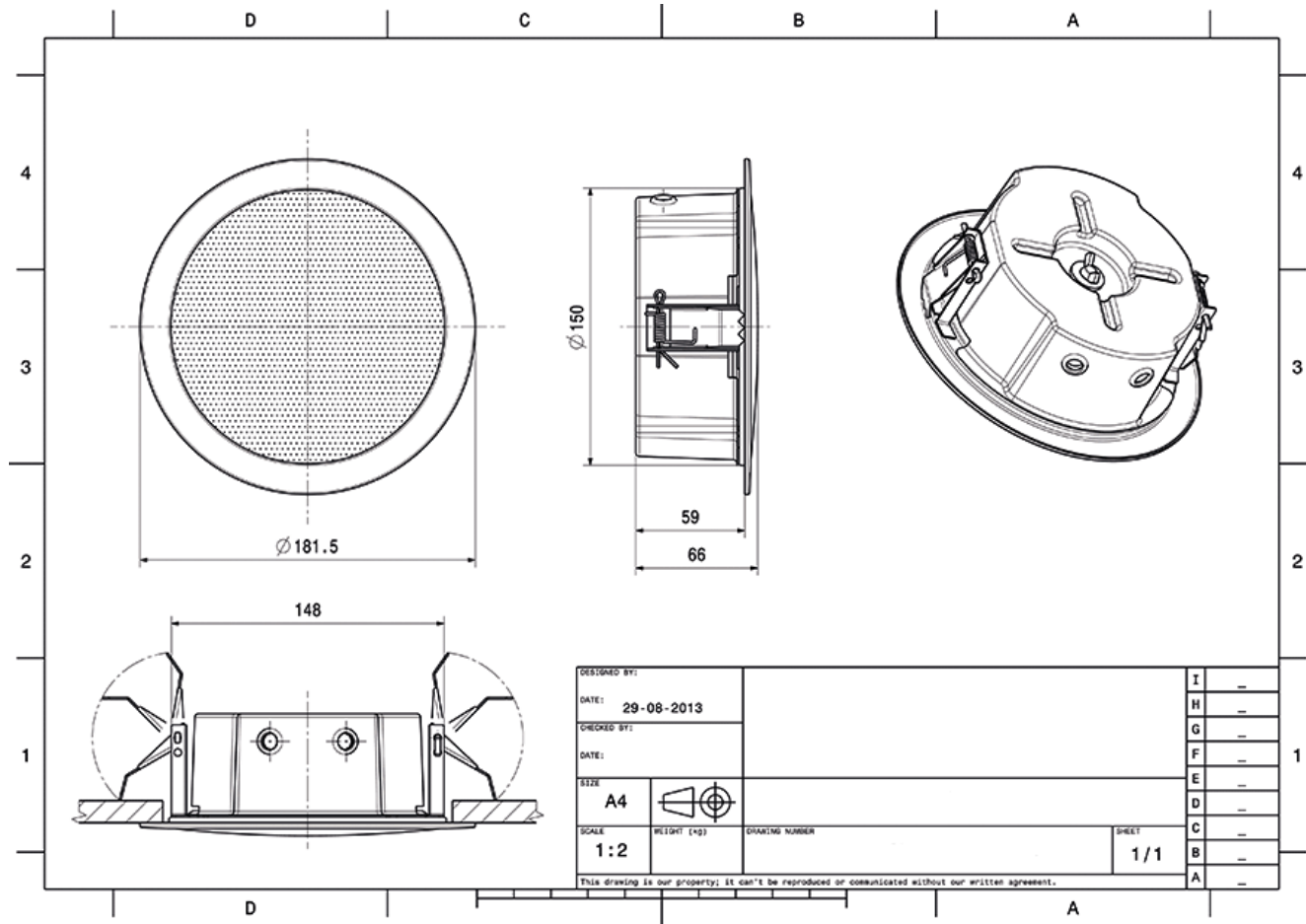


with Firedome





Technical Diagrams





## Electrical specifications

Description	CS-M-6W-130/EN54	
Power	6/3/1,5 W	
Impedance (100V)	1667/3333/6667 ohm	
Frequency Range	104 - 17.200 Hz	
Frequency Response	57 - 24.000 Hz	
SPL, rated noise power / 4m	85,0 dB	
Sensitivity EN54-24, 1W/4m	74,8 db (plastic)	74,2 db (metal)
Sensitivity EN54-24, 1W/1m	86,8 dB	
Dispersion -6dB, 500Hz	plastic/metal 180°	
Dispersion -6dB, 1KHz	plastic/metal 180°	
Dispersion -6dB, 2KHz	plastic/metal 140°	
Dispersion -6dB, 4KHz	plastic/metal 85°/84°	

Please note: Because of many different types of ceiling materials and ceiling strengths we recommend to build in a sample of the speaker to match the requirements accurately.

## Mechanical specifications

Dimensions	181,5x65 mm (plastic) 181,5x91,5 mm (metal)
IP Rating	IP21
Weight (net)	0,51 kg (plastic); 0,71 kg (metal)
Ceiling Cut-out	156 mm
Temperature range	-10 / +55 °C
Mounting	spring clamp
Connector	4-pin screw terminal
Maximum cable cross section	4,9mm <sup>2</sup>
Max. cable cross section loop	2x1,2mm <sup>2</sup>
Colour	RAL 9016