EN
54-24

100V

Fireproof

Features:

- high sound pressure level
- low mounting dept
- with firedome BS 5839 compliant

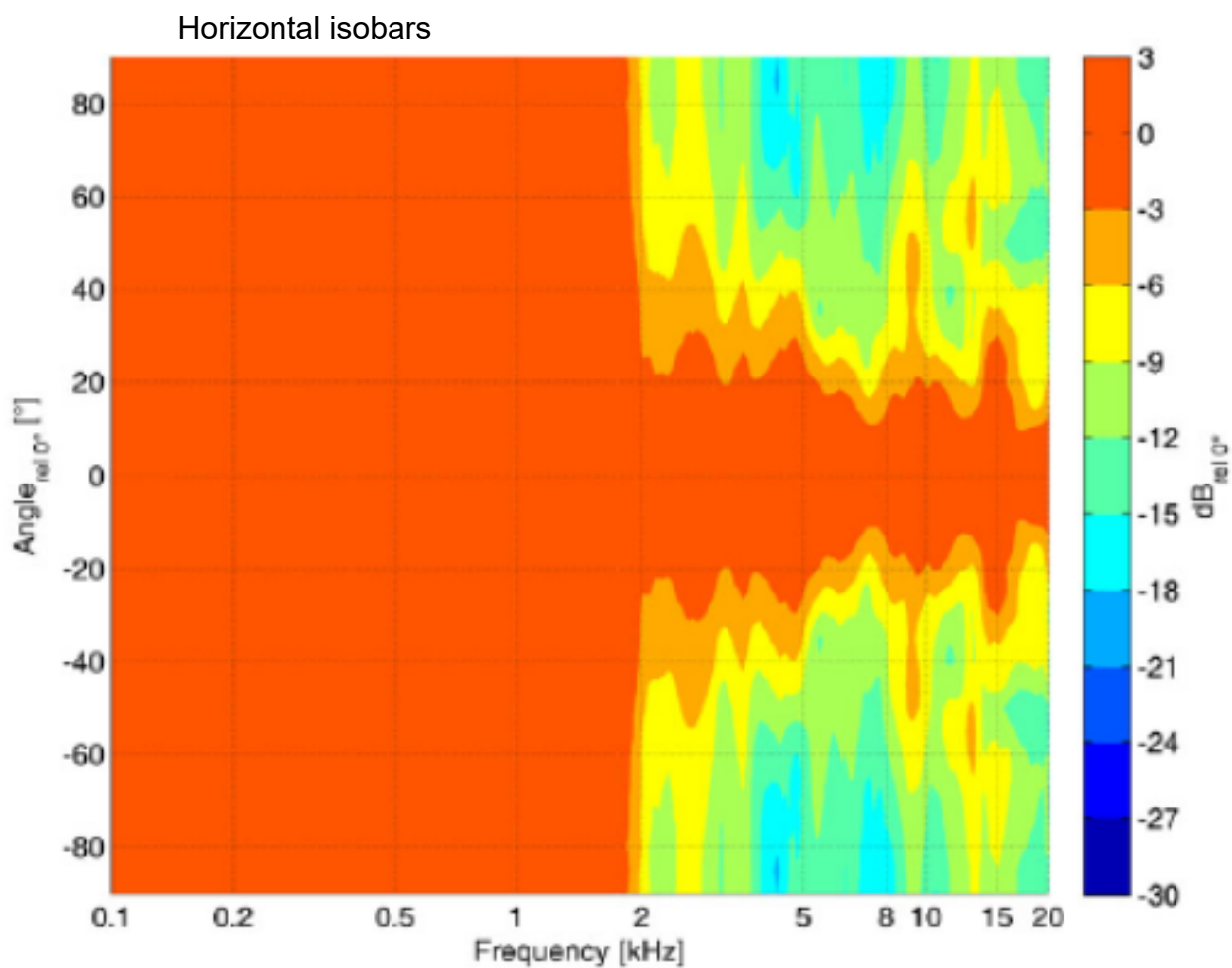
Description

The 10W powered speaker is equipped with a 165mm full-range loudspeaker chassis and a 100V transformer with 3 power adjustments. The powder coated metal similar to RAL 9016 guarantees long-term stability. Thanks to an innovative air flow system, the DL-E provides sound characteristics which are attributed to a conventional bass reflex speaker. An extremely flat construction method allows a low mounting depth of only 76mm, with less than 1 kg product weight. For additional reliability, a 4 pin-ceramic block, a thermal fuse is provided and the speaker chassis is impregnated against wetness. The speaker is also secured with protection class IP 21C against the security risks of environmental influences.

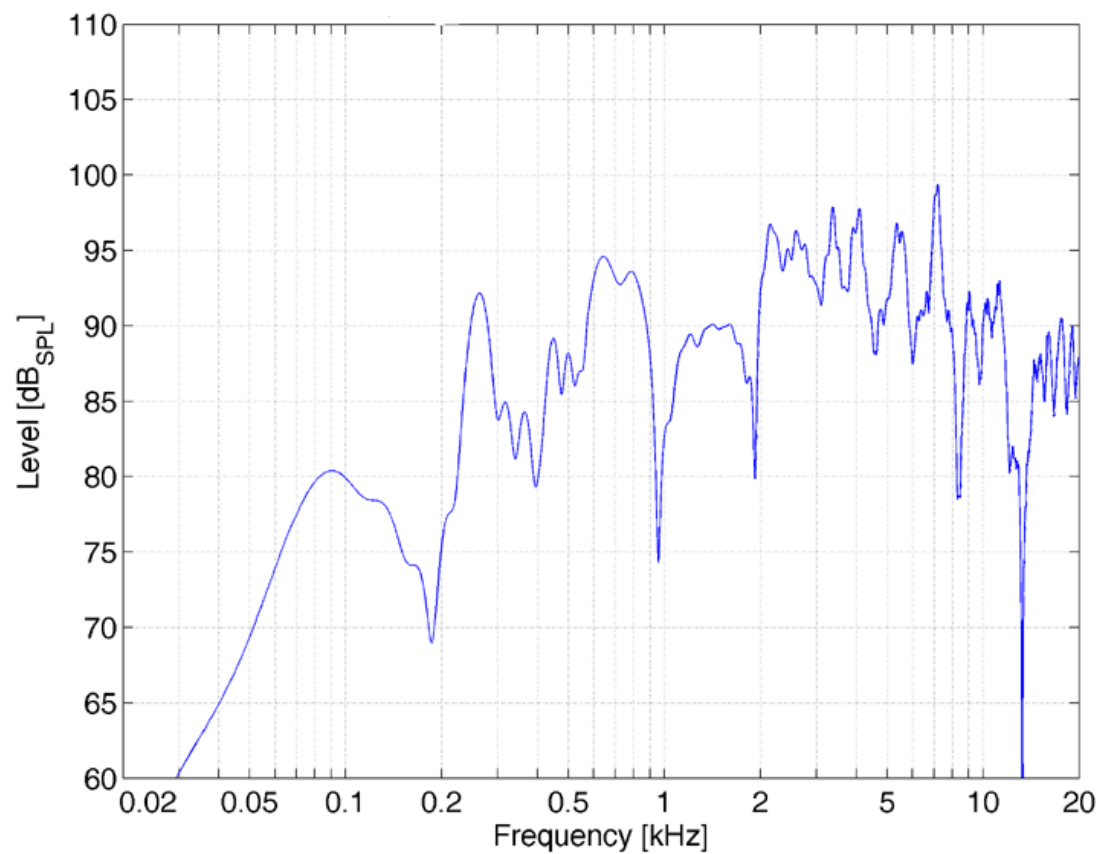
Quick and easy mounting with spring clamps and short tension distance. Perfectly suitable for installations where the installation depth is very limited. In combination with the firedome the speaker is compliant with the British Standard BS 5839, Part 8. Special paint of the speaker in 4-digit RAL- or NCS-colour available at extra cost. The innovative PET-plastic contact protection is included in the delivery and protected by an European patent (publication no. 2768238).

This speaker is suitable for a ceiling strength of about 3 – 45 mm. Our specification is primarily related to solid ceilings, for ceilings with soft materials a higher ceiling thicknesses could be necessary. In addition, stronger cables and other fittings may also result in changes of the appropriate setup. With regard to the variety of materials and manufacturers, we recommend to build in a sample of the speaker to match the requirements accurately.

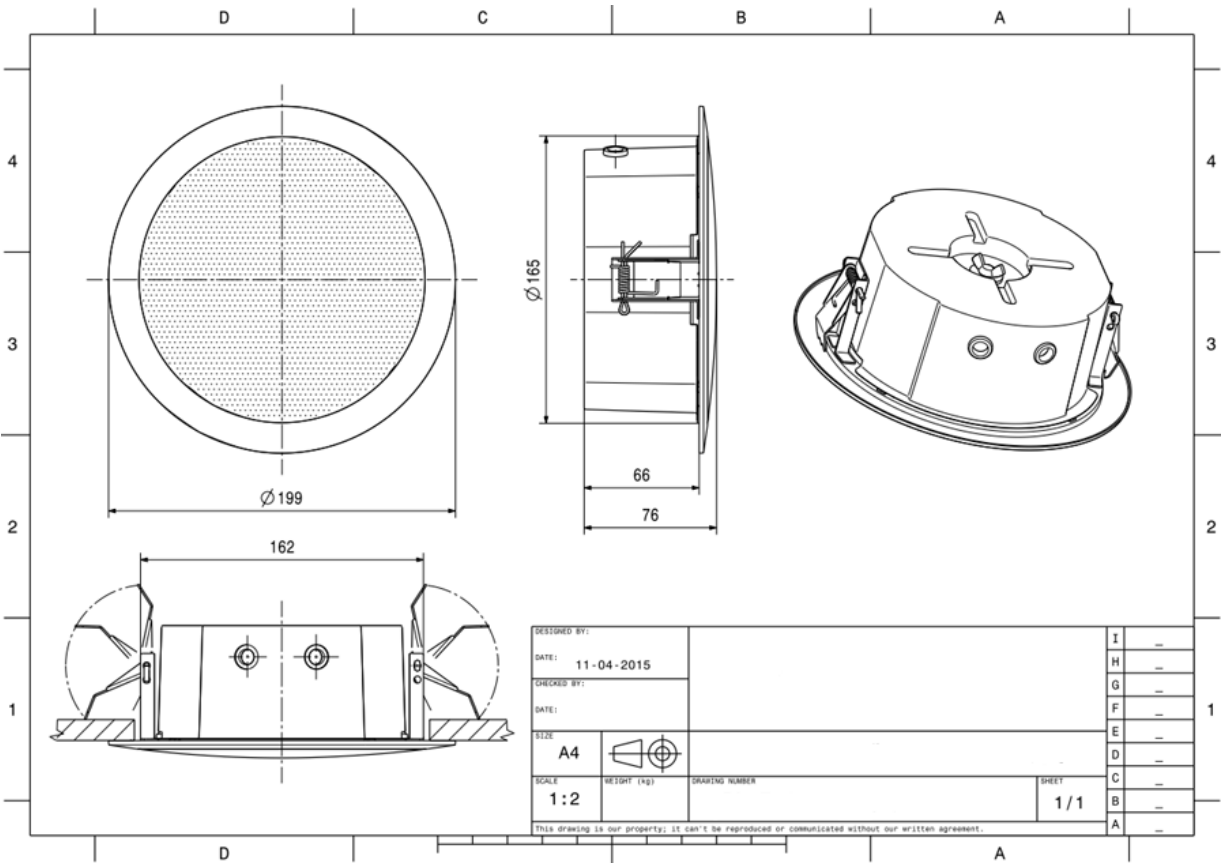
Polar Diagrams



Frequency Response Diagrams



Technical Diagrams



Electrical specifications

Description	CS-M-10W-165/EN safe
Power	10/5/2,5 W
Impedance (100V)	1000/2000/4000 ohm
Frequency Range	232 - 11.900 Hz
Frequency Response	71 - 23.500 Hz
SPL, rated noise power / 4m	85,0 dB
Sensitivity EN54-24, 1W/4m	75,3 dB
Sensitivity EN54-24, 1W/1m	87,3 dB
Dispersion -6dB, 500Hz	V 180° H 180°
Dispersion -6dB, 1KHz	V 180° H 180°
Dispersion -6dB, 2KHz	V 145° H 145°
Dispersion -6dB, 4KHz	V 72° H 72°

Please note: Because of many different types of ceiling materials and ceiling strengths we recommend to build in a sample of the speaker to match the requirements accurately.

Mechanical specifications

Dimensions	199 x 73 mm
IP Rating	IP21
Weight (net)	0,72 kg
Ceiling Cut-out	166 mm
Temperature range	-10 / +55 °C
Mounting	spring clamp
Connector	4-pin screw terminal
Colour	RAL 9016