



Features:

- High sound pressure level
- Low mounting depth
- Quick mounting

Description

... " ... -V ...

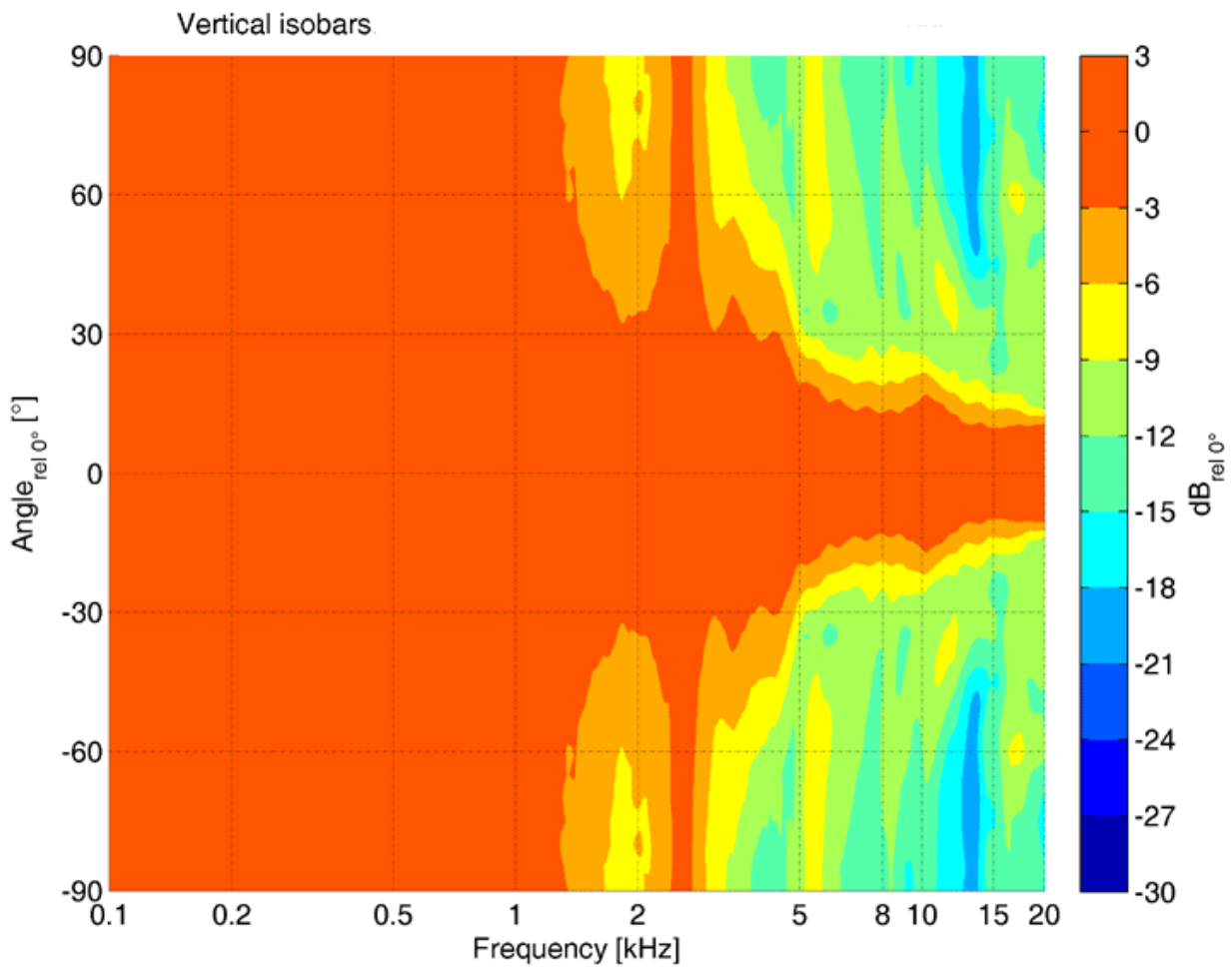
u ... † ... 7 ... † ...

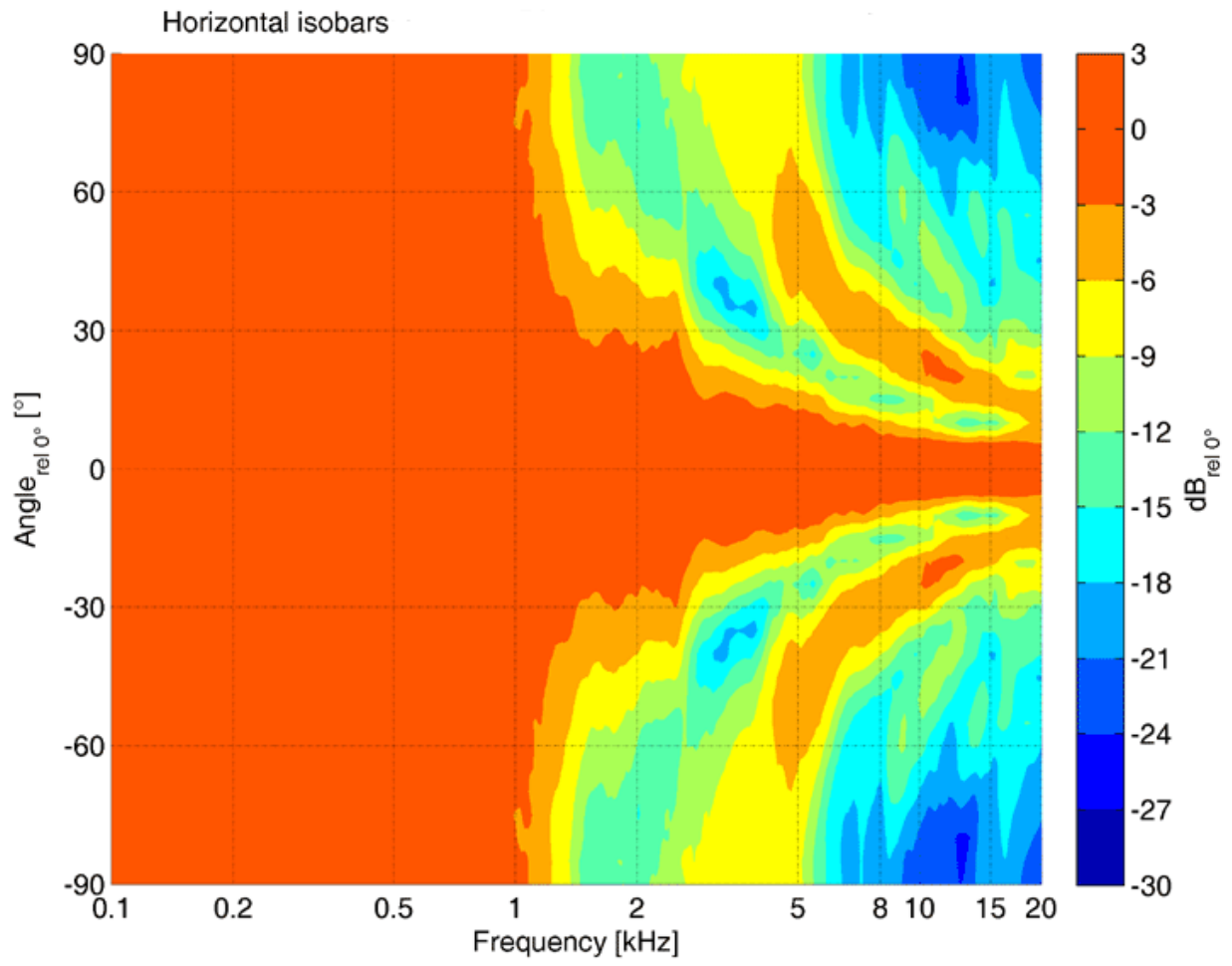
h ... # ...

j ... h ... \ ... @ ...

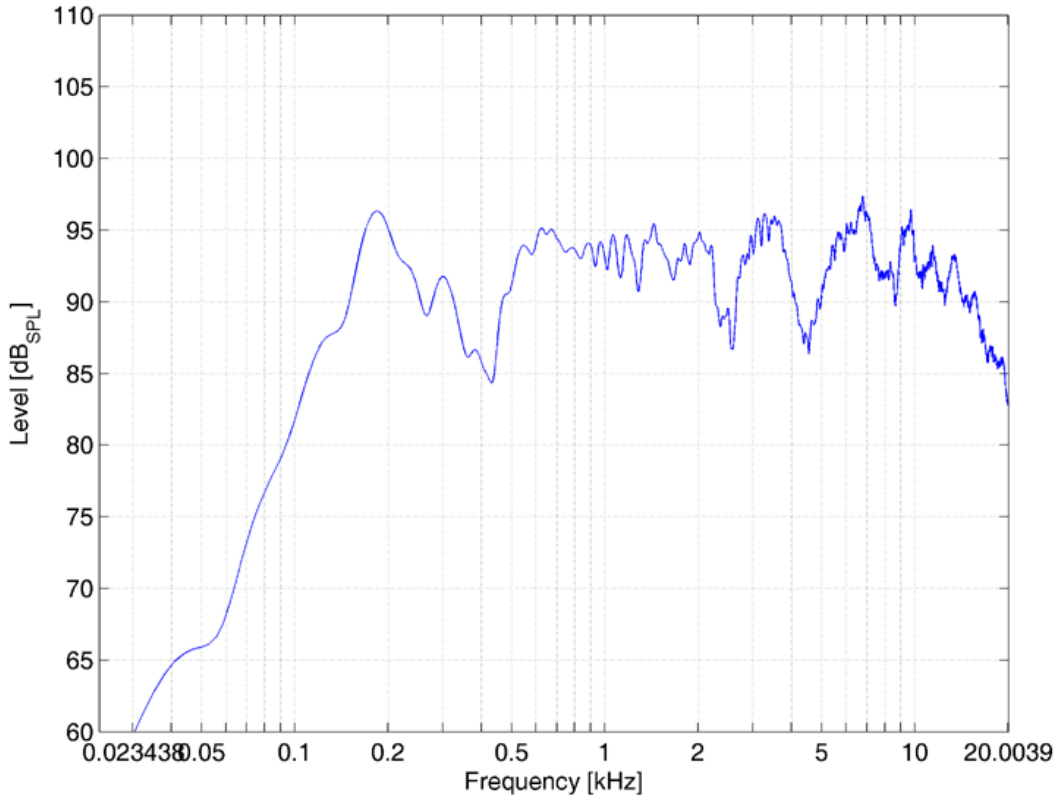
u ... † ...

Polar Diagrams

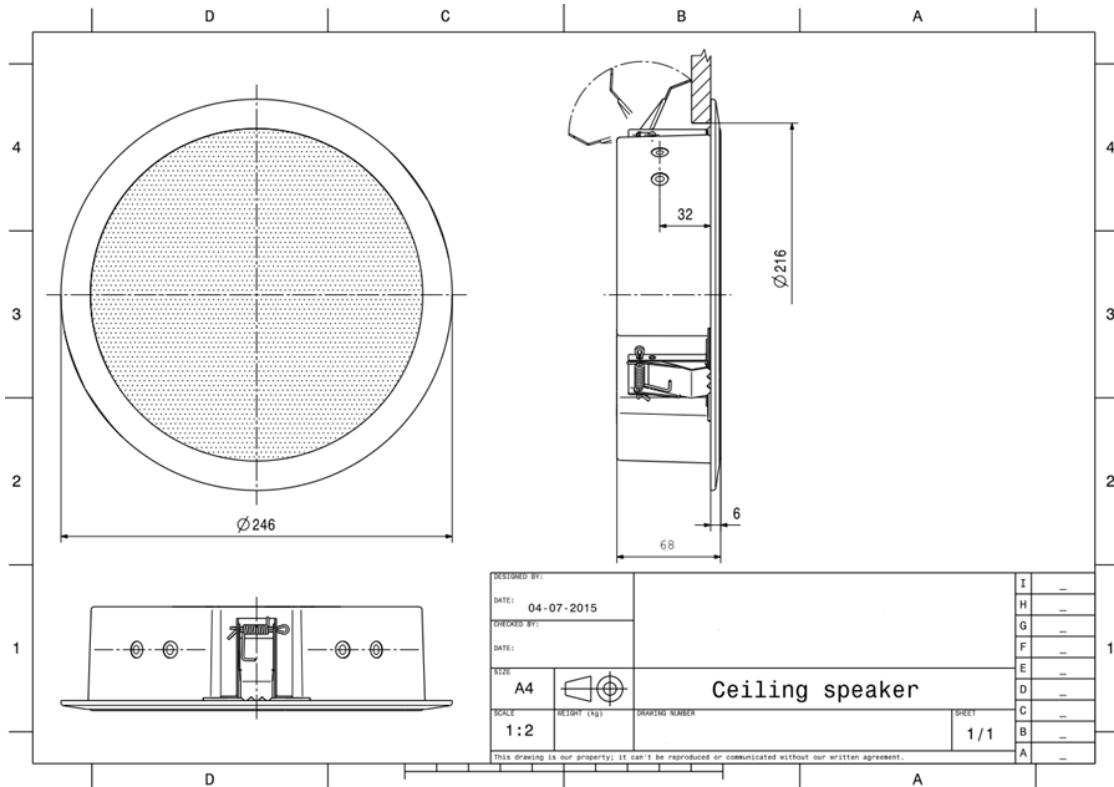




Frequency Response Diagrams



Technical Diagrams



Electrical specifications

Description	CS/AB-M-6W-100/EN safe	
Power	2x6/3/1,5 W	
Impedance (100V)	2 x 1667/3333/6667 ohm	
Frequency Range	103 - 20.100 Hz (single); 107 - 19.600 Hz (double)	
Frequency Response	96 - 23.300 Hz (single); 101 - 22.900 Hz(double)	
SPL, rated noise power / 4m	83,0 dB (single);	88,0 dB (double)
Sensitivity EN54-24, 1W/4m	73,0 dB (single);	77,0 dB (double)
Sensitivity EN54-24, 1W/1m	85,0 dB (single);	89,0 dB (double)
Dispersion -6dB, 500Hz	single h/v 180°	double h/v 180°
Dispersion -6dB, 1KHz	single h/v 180°	double h/v 180°
Dispersion -6dB, 2KHz	single h/v 180°	double h/v 77°/137°
Dispersion -6dB, 4KHz	single h/v 150°/100°	double h/v 33°/90°

Please note: Because of many different types of ceiling materials and ceiling strengths we recommend to build in a sample of the speaker to match the requirements accurately.

Mechanical specifications

Dimensions	246x66 mm
IP Rating	IP21
Weight (net)	1,10 kg
Ceiling Cut-out	218 mm
Temperature range	-10 / +55 °C
Mounting	spring clamp
Connector	2-pin ceramic block
Colour	RAL 9016